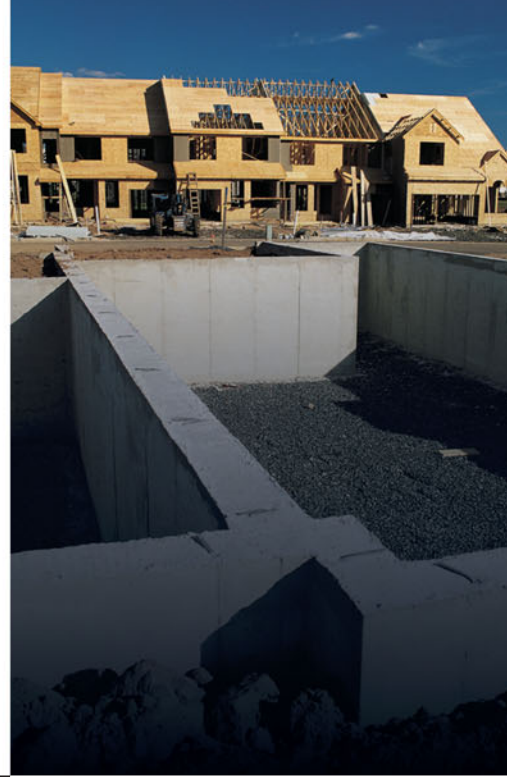


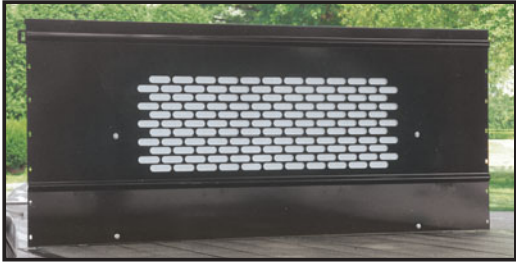
STAHL[®]

Stake Bodies

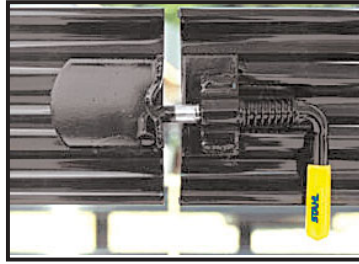


The STAHL stake body is built to handle whatever your job requires. From a sturdy understructure to the all galvalneal steel stake racks, the STAHL stake body line has been designed with you in mind. Many models are available for you to choose from including wood (pine and apitong), smooth steel, and treadplate floors as well as solid sides that accommodate waste/debris hauling and landscaping applications. Optional equipment such as underbody boxes, hoists, swing-out rear gates, and hitches will help you customize your body to your specific requirements. Get it ALL with STAHL!

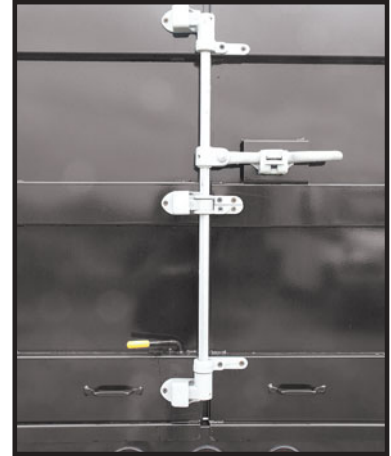
Features



Standard punched window pattern in bulkhead allows visibility and protects the driver from shifting cargo.



Anti-rattle, spring loaded heavy-duty stake rack hardware prevents corrosion and is easy to operate.



Solid sides have swing-out rear barn doors that feature a heavy-duty three point catch, spring-latches and door holders.



Stake rack sides are available in 30" and 40" heights in steel (shown) or wood. Swing-out sections are also available.



Optional underbody toolboxes have ample storage for tools and equipment.



Solid Sides



Optional Equipment

- Apitong Wood Floor
- Bulkhead
- Floor Overlays (smooth steel or treadplate)
- Rub Rail
- Solid Sides
- Tie Down Hooks
- Tie Down Ring
- Wood Stake Racks

STAHL®

3201 West Old Lincoln Way

Wooster, OH 44691

(330) 264-7441

Customer Service

Cardington, OH 800-277-8245

Durant, OK 800-972-9980

Merced, CA 800-348-4335

info@stahl.cc

www.stahl.cc



Photographs may contain optional equipment. Specifications subject to change without notice.